

SECTION II

RODDING EYE

Stainless steel
products



ZEW
INWESTYCJE

STAINLESS STEEL PRODUCTS

Table of Contents

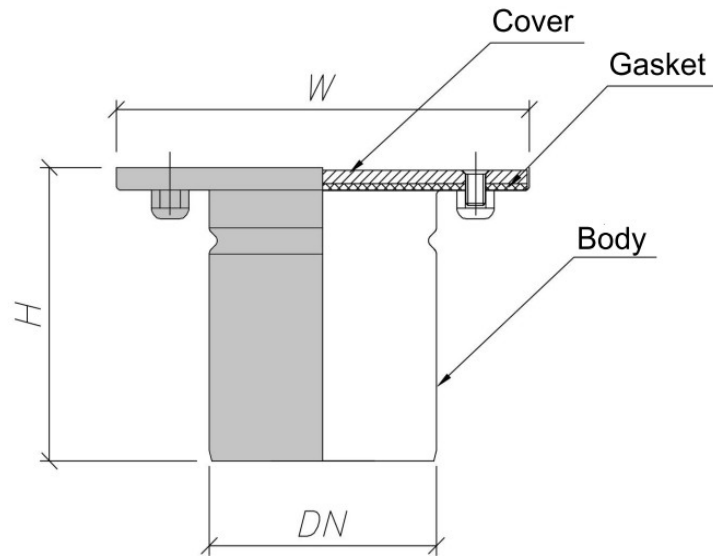
<i>PRODUCT DESCRIPTION</i>	3
<i>Rodding eye with smooth/anti-slip cover RV</i>	4
<i>rodding eye with cover for ceramic plates RVP</i>	7
<i>rodding eye with water trap and strainer RVU</i>	8

product description

RV 200.110.V 1 G

RV rodding eye with cover
RVP rodding eye with cover for ceramic plate
RVU rodding eye with water trap and strainer
dimensions of upper part
outlets diameter
vertical outlet
body one part
G smooth cover
R anti-slip cover

RODDING EYE WITH SQUARE UPPER PART -ONE PART VERTICAL



Symbol	catalog number	dimensions [mm]					
		W	H	h	DN	D	D _κ
RV150.110.V1	01.411.21x.1	150x150	140	-	110	-	-
RV200.110.V1	01.412.21x.1	200x200	140	-	110	-	-
RV200.160.V1	01.412.31x.1	200x200	140	-	160	-	-
RV250.110.V1	01.413.21x.1	250x250	140	-	110	-	-
RV250.160.V1	01.413.31x.1	250x250	140	-	160	-	-
RV250.200.V1	01.413.41x.1	250x250	140	-	200	-	-

(*) individual dimensions on request

(**) in the catalog number, place the grating number in place of x

 **RODDING EYE COMPONENTS**

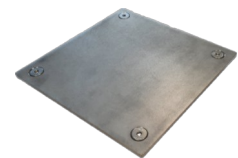
Body

Rubber Gasket

Cover: **L15**: smooth plate x=4 , anti-slip plate x=5

(***) other loading class on requests / R50 ; M125 ; N250 ; P400 / loading class accordind to EN 1253

smooth plate



 **MATERIAL**

Stainless Steel AISI 304 or AISI 316

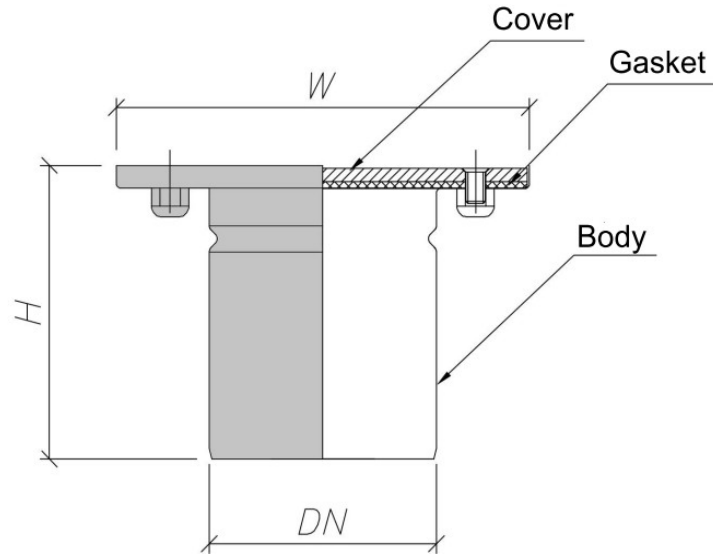
 **Edge reinforcement**

no

anti-slip plate



RODDING EYE WITH SQUARE UPPER PART -ONE PART VERTICAL



Symbol	catalog number	dimensions [mm]					
		W	H	h	DN	D	D _k
RV300.110.V1	01.414.21x.1	300x300	140	-	110	-	-
RV300.160.V1	01.414.31x.1	300x300	140	-	160	-	-
RV300.200.V1	01.414.41x.1	300x300	140	-	200	-	-
RV300.250.V1	01.414.51x.1	300x300	140	-	250	-	-
RV350.110.V1	01.415.21x.1	350x350	140	-	110	-	-
RV350.160.V1	01.415.31x.1	350x350	140	-	160	-	-
RV350.200.V1	01.415.41x.1	350x350	140	-	200	-	-
RV350.250.V1	01.415.51x.1	350x350	140	-	250	-	-

(*) individual dimensions on request

(**) in the catalog number, place the grating number in place of x

RODDING EYE COMPONENTS

Body

Rubber Gasket

Cover: L15: smooth plate x=4 , anti-slip plate x=5

(**) other loading class on requests / R50 ; M125 ; N250 ; P400 / loading class according to EN 1253

MATERIAL

Stainless Steel AISI 304 or AISI 316

Edge reinforcement

no

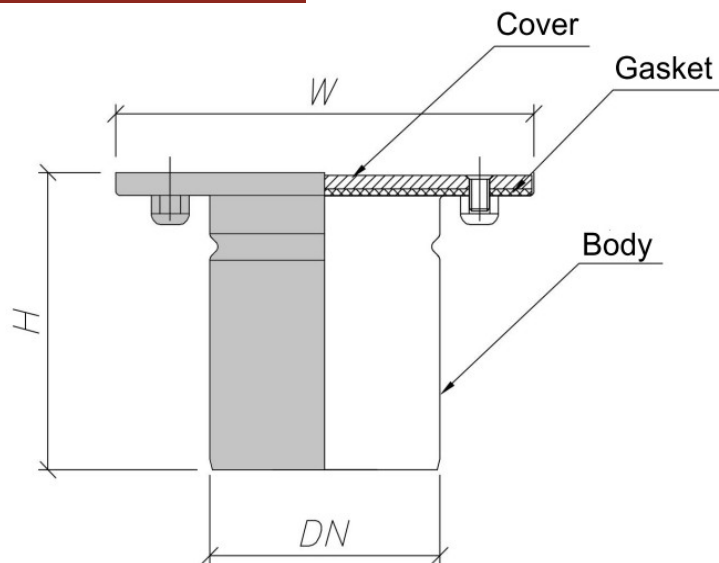
smooth plate



anti-slip plate



RODDING EYE WITH SQUARE UPPER PART -ONE PART VERTICAL



Symbol	catalog number	dimensions [mm]					
		W	H	h	DN	D	D _k
RV400.110.V1	01.416.21x.1	400x400	140	-	110	-	-
RV400.200.V1	01.416.41x.1	400x400	140	-	200	-	-
RV400.250.V1	01.416.51x.1	400x400	140	-	250	-	-
RV400.300.V1	01.416.61x.1	400x400	140	-	300	-	-
RV400.350.V1	01.416.71x.1	400x400	140	-	350	-	-
RV450.400.V1	01.417.81x.1	450x450	140	-	400	-	-

(*) individual dimensions on request

(**) in the catalog number, place the grating number in place of x

RODDING EYE COMPONENTS

Body

Rubber Gasket

Cover: L15: smooth plate x=4, anti-slip plate x=5

(***) other loading class on requests / R50 ; M125 ; N250 ; P400 /

loading class according to EN 1253

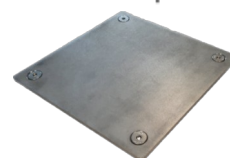
MATERIAL

Stainless Steel AISI 304 or AISI 316

Edge reinforcement

no

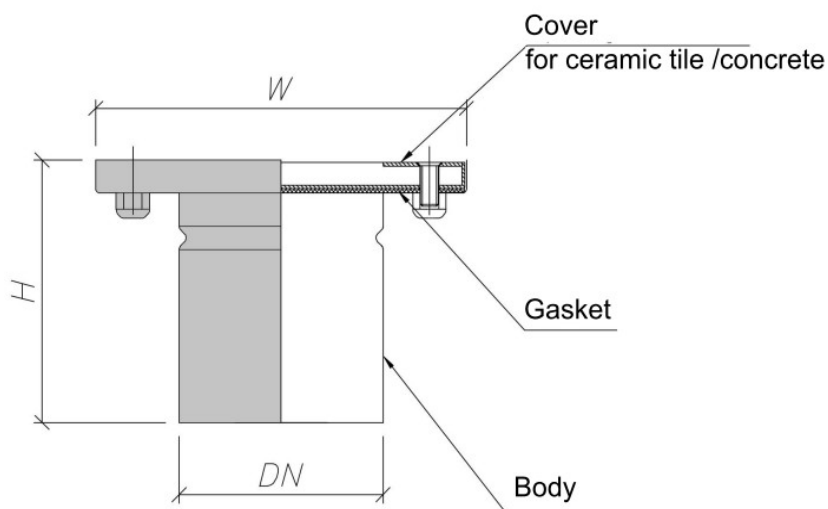
smooth plate



anti-slip plate



**RODDING EYE WITH SQUARE UPPER PART,
COVER FOR CERAMIC TILE/CONCRETE -ONE
PART VERTICAL**



Symbol	catalog number	dimensions [mm]					
		W	H	h	DN	D	D _K
RVP200.110.V1	01.422.218.1	200x200	140	-	110	-	-
RVP200.160.V1	01.422.318.1	200x200	140	-	160	-	-
RVP250.160.V1	01.423.318.1	250x250	140	-	160	-	-
RVP250.200.V1	01.423.418.1	250x250	140	-	200	-	-
RVP300.110.V1	01.424.218.1	300x300	140	-	110	-	-

(*) individual dimensions on request

 **RODDING EYE COMPONENTS**

Body

Rubber Gasket

Cover: **K3**: for ceramic tile /concrete
loading class accordind to EN 1253



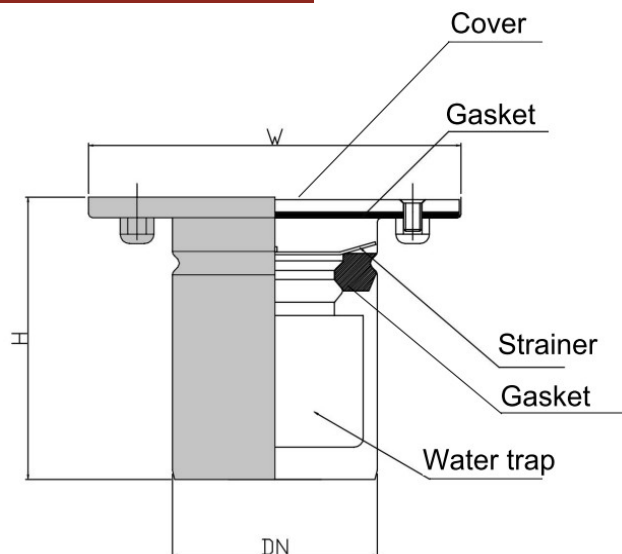
 **MATERIAL**

Stainless Steel AISI 304 or AISI 316

 **Edge reinforcement**

No

RODDING EYE WITH SQUARE UPPER PART -ONE PART VERTICAL WITH WATER TRAP



Symbol	catalog number	dimensions [mm]					
		W	H	h	DN	D	D _K
RVU150.110.V1	01.141.21x.1	150x150	140	-	110	-	-

(*) individual dimensions on request

(**) in the catalog number, place the grating number in place of x

 **RODDING EYE COMPONENTS**

Body

Strainer

Water trap with gasket

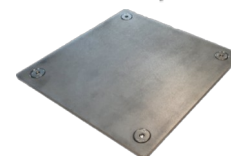
Rubber plate-gasket

Plate cover: **L15**: smooth cover x=4 , anti-slip cover x=5

(***) other loading class on requests / R50 ; M125 ; N250 ; P400 /

loading class accordind to EN 1253

smooth plate



 **MATERIAL**

Stainless Steel AISI 304 or AISI 316

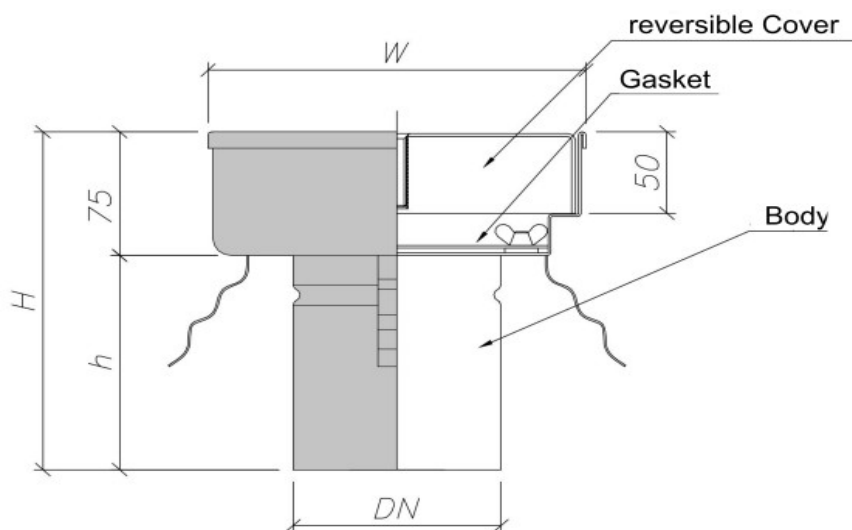
anti-slip plate



 **Edge reinforcement**

No

RODDING EYE WITH SQUARE UPPER PART WITH REVERSIBLE COVER -ONE PART VERTICAL



Symbol	catalog number	dimensions [mm]					
		W	H	h	DN	D	D _k
RVO200.110.V1	01.452.218.2	200x200	205	130	110	-	-
RVO250.110.V1	01.453.218.2	250x250	205	130	110	-	-
RVO250.160.V1	01.453.318.2	250x250	205	130	160	-	-

RODDING EYE COMPONENTS

Body

Rubber plate-gasket

Reversiblecover : L15 cover to be filled with concrete

K3 cover placed with the sheet metal facing up

loading class accordind to EN 1253

MATERIAL

Stainless Steel AISI 304 or AISI 316

Edge reinforcement

No



POLISH
PRODUCT



SEE MORE
www.zew-inwestycje.eu



ZEW INWESTYCJE

5a Magazynowa Street
30-858 Kraków

phone: +48 515 296 026

kontakt@zew-inwestycje.eu
www.zew-inwestycje.eu